

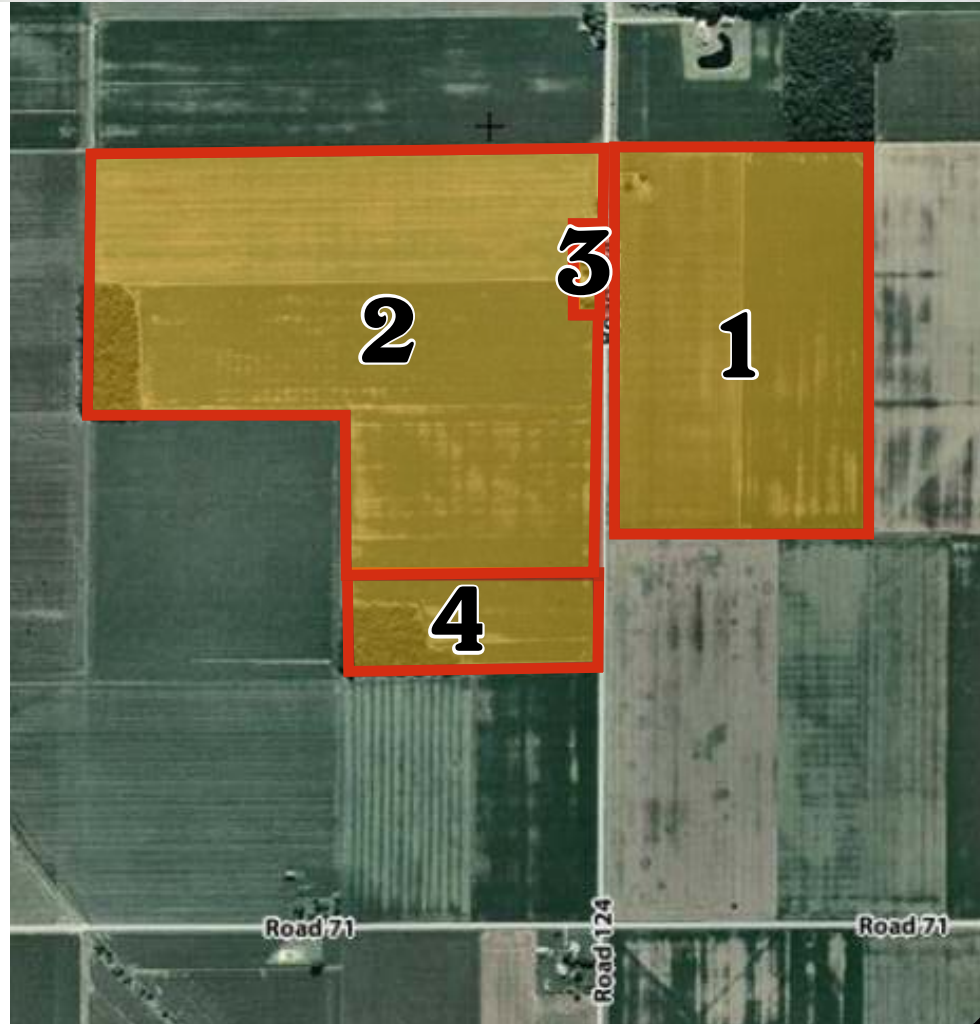
**Gorrell Bros.**  
**AUCTIONEERS & REAL ESTATE**  
 1201 N. Williams • Paulding, OH  
[www.gorrellbros.com](http://www.gorrellbros.com)

**LAND AUCTION**  
**182+ - Acres**  
**Southwest of Paulding, Ohio**  
**Thurs. August 19, 2010 @ 5:00p.m.**  
**Offered in 4 Parcels and Combinations**  
**Pole Barn & 2.6 Acres & Trees**  
**& Land Parcels of 13 Acres w/woods**  
**& 61 Acres & 105 Acres of Farm Land**

**Auction Procedure:** The auction will be conducted using a Multi Parcel Bidding System with the bidder being able to bid on one, all, or any combination of Auction Parcels during the entire Auction Process

**Terms:** \$5,000 earnest money for Parcels 1 & 2 & \$2,000 earnest money for Parcels 3 & 4 on the day of auction upon the signing of the purchase agreement with the balance due at closing on or before Sept. 20, 2010 upon delivery of Deed and Certificate of Title. Seller will pay 2010 Real Estate taxes.

**Possession:** The farm land is rented for the 2010 crop year and possession is given at closing subject to the existing lease with seller reserving the 2010 crops. If harvesting of the 2010 crops occurs prior to closing of the transaction, possession of the tillable land upon which the 2010 crops have been harvested is given to the Buyer upon the signing and acceptance of the Sale Contract Of Real Estate in order to allow Buyer to prepare the land for planting of the 2011 crops. Buyer takes said possession at Buyer's sole risk and responsibility and agrees to timely close the real estate transaction upon presentation of the closing documents to the Buyer by the Seller



**Gorrell Bros.**  
**AUCTIONEERS & REAL ESTATE**  
 1201 N. Williams • Paulding, OH  
[www.gorrellbros.com](http://www.gorrellbros.com)

**Date/Time:** Thurs., August 19, 2010  
 5:00 P.M.

**Auction Location:** Gorrell Bros. Office & Auction Facility at 1201 N. Williams St., Paulding, OH

**Farm Location:** 1 1/2 miles west of Paulding, OH on Rt. 111 to Rd. C-87; Then south on C-87 for 1 mile to Rd T-124; Then west on T-124 1 1/2 miles - watch for auction signs

**Sellers:**  
 Pauline H. Hetz Trust by The State Bank & Trust Company, DBA Reliance Financial Services, Successor Trustee; Ralph W. Gallagher of Gallagher, Stelzer & Yosick, LTD, Attorney

Gorrell Bros. Auctioneers: 1201 N. Williams St., Paulding, OH 419-399-4066  
 Don Gorrell, Sale Mgr - Larry D. Gorrell, Broker - Stephen Sprow - Joe Barker - Aaron Timm - Nolan Shisler - Sandra Mickelson, Auctioneers

### Parcel 1



**61.141 Acres**, nearly all tillable except for small area with an old windmill .... Productive Latty type soil (this tract is all in soybeans for 2010)

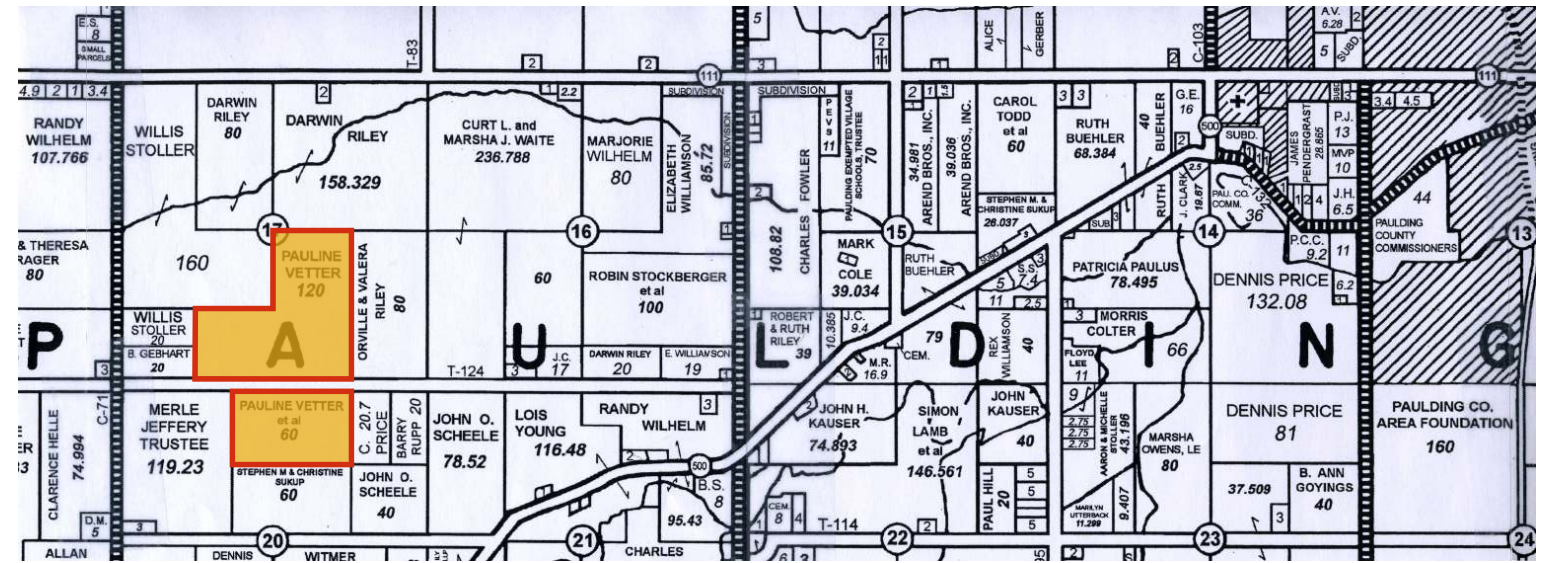
### Parcel 2



**105.661 Acres**, nearly all tillable except for a small wooded area in the northwest corner .... Productive Latty type soil (this tract is all in corn for 2010)

# LAND AUCTION

Date/Time: Thursday, August 19, 2010 - 5:00 P.M.



## 182+ - Acres

## Gorrell Bros.

AUCTIONEERS & REAL ESTATE  
1201 N. Williams • Paulding, OH

[www.gorrellbros.com](http://www.gorrellbros.com)

### Parcel 3



A Gorrell Bros. Agent will be at Parcel 3 on Thurs. July 29, from 5:00p.m. - 6:00p.m. and Sat. August 7, from 1:00p.m. - 2:00p.m. or call the office.

**2.611 Acres with Pole Barn**, 325 ft. x 350 ft. with approximate 46 ft. x 53 ft. pole barn, a few trees, driveway and an old well

### Parcel 4



**13.488 Acres**, nice smaller parcel with approximately 4 acres of woods at the rear with 442' of frontage.

