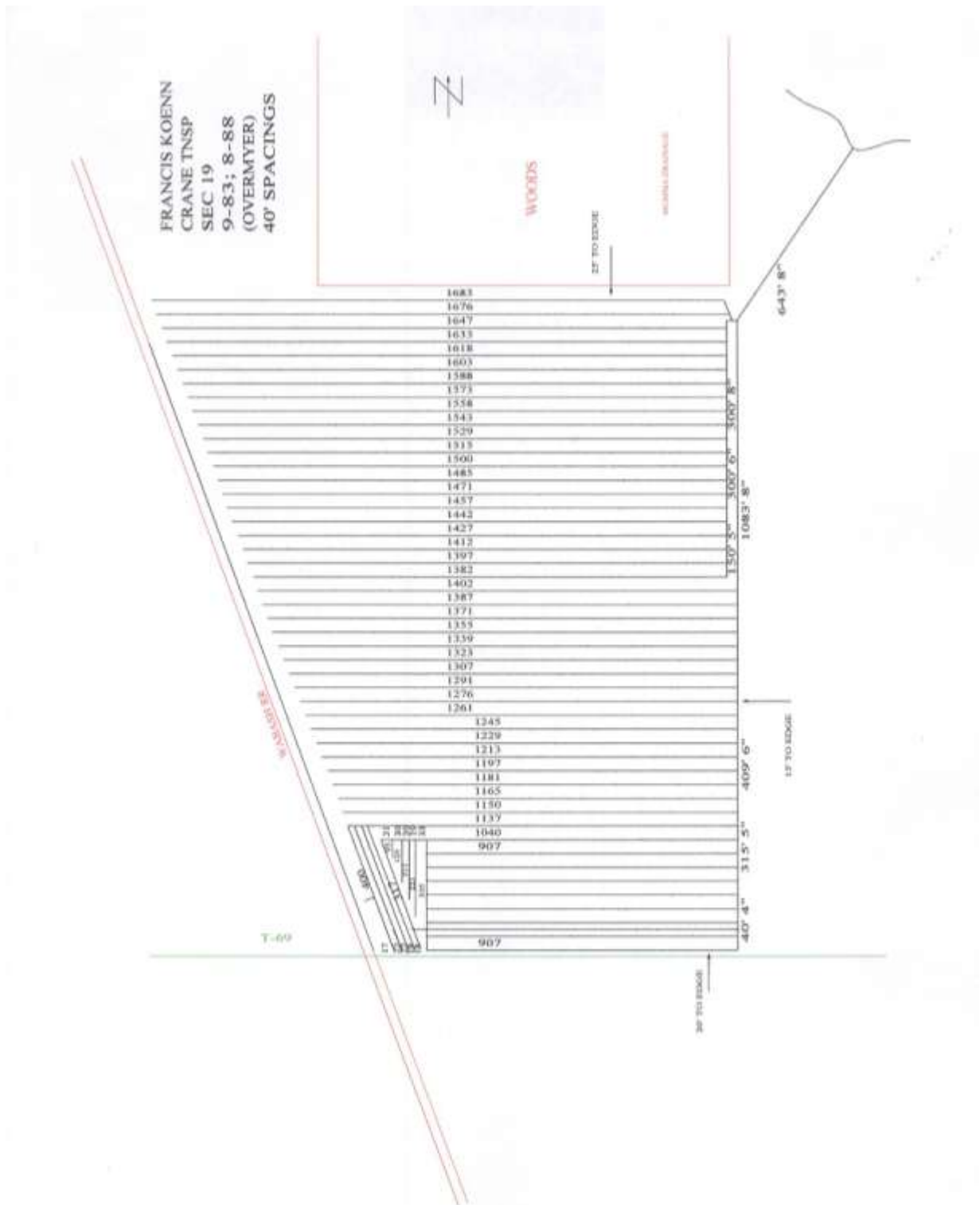


Parcel 2 Tile Map



SUBJECT: KOENN FRANCIS KOENNF FK =
 DESCRIPTION: CRANE TNSP, SEC 19
 DATE: FK1988B & FK1988BZ (ZOOM) 9-83; 8-88; 8-97 (OVERMYER)

NOTES: JUST EAST OF ZUBER CUTOFF. ORIGINALLY INSTALLED IN 83, WENT IN & SPLIT 4 LATERALS WHERE DRIVE IS. FK1988BZ SHOWS NEW SPACINGS FOR SPLIT LATERALS IN 88.
 8-97: WE INSTALLED A CATCH BASIN IN THE SURFACE DRAIN ON THE WEST END OF THE FIELD ALONG THE RR TRACKS. WE INSTALLED 943' OF 5" POLY AS AN OUTLET FOR THE CATCH BASIN. IT RUNS BETWEEN THE 2ND & 3RD LATERALS & IS TAPPED INTO 5" IN THE MAIN OUTLET. WE FOUND 1 EXISTING LATERAL IN THE SURFACE DRAIN THAT WAS 1/2 FULL OF MUD.