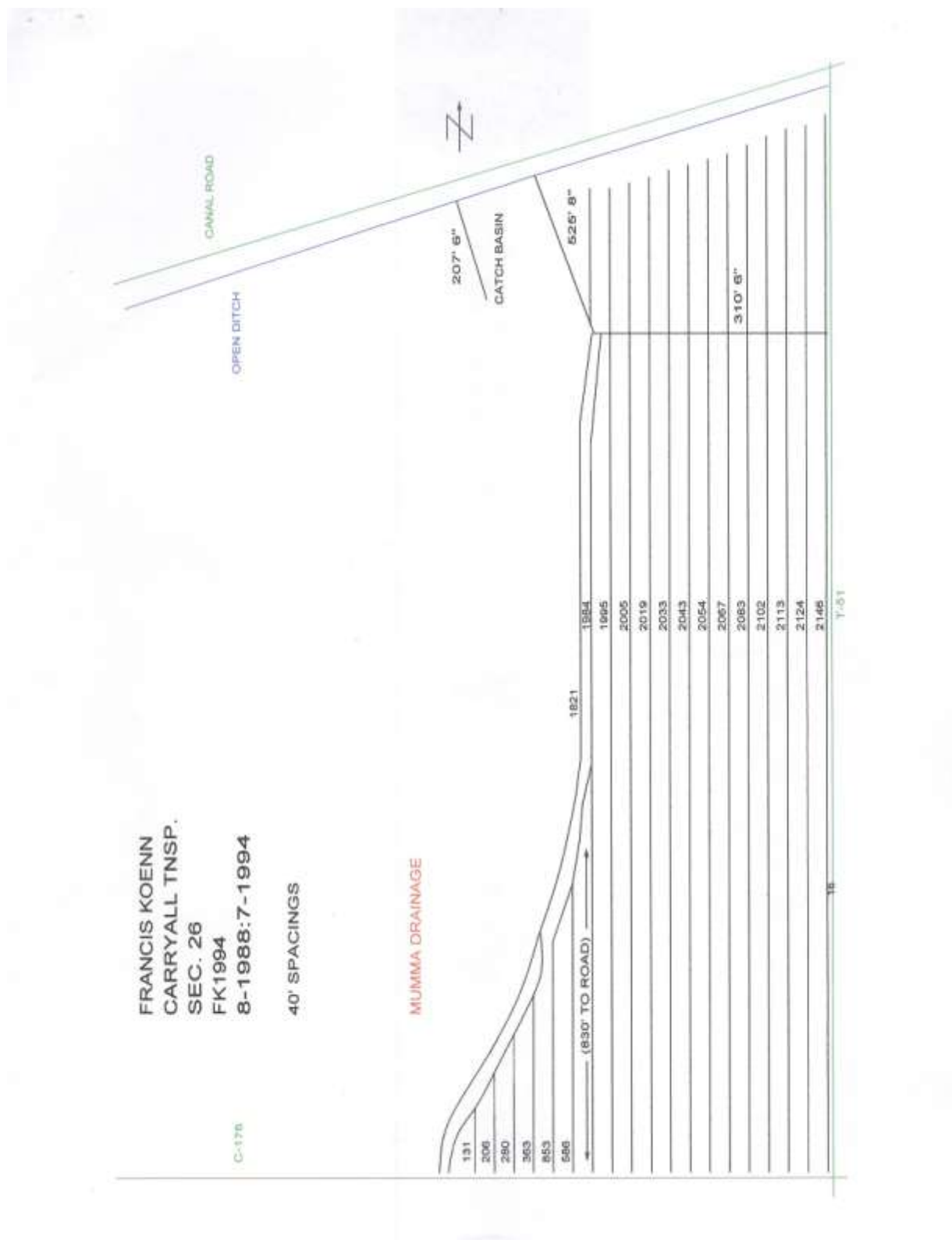


Parcel 1 Tile Map



SUBJECT: KOENN FRANCIS KOENNY FK -
DESCRIPTION: CARRYALL TNSP, SEC 26
DATE: FK1994 8-88;7-94 INSIDE CANAL RESEVOIR

NOTES: 1988; LATERAL FOLLOWS DYKE WALL ON EAST SIDE IN LOW GROUND, 1821' OF 4" POLY WAS INSTALLED WITH STONE DUMPED IN LOW SPOTS. TAPPED INTO EXISTING CLAY OUTLET WITH 8" POLY. END OF OUTLET WAS NOT ALTERED & IT CONTINUES TO DRAIN ALL THAT IT DID BEFORE. 1994; DITCHED ALL THE AREA EAST OF THE DIKE, APPROX. 30 ACRES. THE NEW LATERALS ARE AT 40'. THE EAST LATERAL ALONG T-51 IS 16' FROM THE ROAD DITCH. WE RAN A NEW OUTLET OUT TO THE LOW GROUND THROUGH THE CANAL BANK, THEN TURNED & RAN IT EAST. THIS OUTLET IS APPROX. 1700' FROM THE SOUTH END OF THE FIELD. THE CANAL ROAD RUNS AT AN ANGLE SO I DIDN'T USE IT AS A REFERENCE. IN THIS OUTLET THERE ARE 525' OF 8" & 310' 6". THE LATERALS ON THE NORTH SIDE OF THE OUTLET GET SHORTER AS THEY GO TO THE WEST DUR TO THE ANGLE OF THE CANAL. THERE ARE 12 FULL LENGTH LATERALS, & THE 13TH ONE GOES TO THE ROAD, BUT THE PART ON THE NORTH SIDE OF THE OUTLET DOESN'T LINE UP WITH THE SOUTH END AT THE TAP ON THE 13TH. THE 13TH LATERAL IS APPROX. 15' EAST OF THE ONE WE RAN IN 1988, BUT IT CURVES & GOES STRAIGHT TO LINE UP WITH THE 12TH ON THE SOUTH END. WE FILLED IN THE AREA IN THE SOUTH POINT AS SHOWN ON MAP. THE 1988 LATERAL IS TAPPED INTO THE NEW OUTLET. KOENNS INSTALLED A CATCH BASIN JUST NORTH OF THE NEW OUTLET THAT IS TAPPED INTO THE EXISTING CLAY OUTLET. WE ALSO RAN A NEW OUTLET ON THE WEST SIDE OF THE DIKE FOR A CATCH BASIN THAT THEY INSTALLED.